

Station 1

Resources:

Question paper

Copies of the worksheet

Scrap paper

Marking:

Correct complete solution – 6 marks

| Meal | Number |
|-------------------------|--------|
| Soup & Salmon | 4 |
| Soup & Pizza | 6 |
| Prawn Cocktail & Salmon | 2 |
| Prawn Cocktail & Pizza | 8 |

Notes:

Ensure any scrap paper is cleared away before the next team arrives.

Station 2

Resources:

Question paper

Number cards

Marking: Any correct solution – 6 marks

| | | |
|----|----|----|
| -1 | 0 | -5 |
| -6 | -2 | 2 |
| 1 | -4 | -3 |

Notes:

Any rotation of this grid is acceptable.

Ensure any scrap paper is cleared away before the next team arrives.

Station 3

Resources:

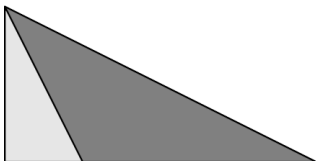
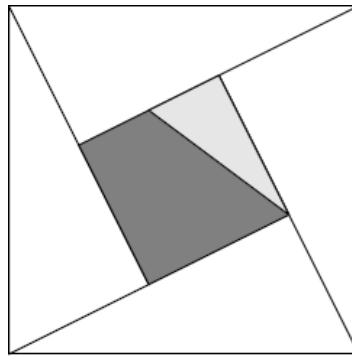
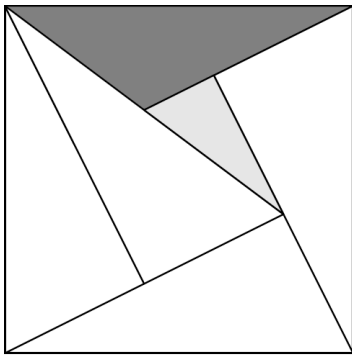
Question paper

Copies of triangles on card

Scissors

Marking:

Correct solution (two possible) – 6 marks



Notes:

Please ensure any pieces of triangles are removed before the next team arrives. Complete triangles can be recycled for later teams. If teams request extra triangles to cut up please give them out but only **one** cut triangle can form part of the solution.

Station 4

Resources:

Question paper

Copies of the worksheet

Marking:

a) 31

b) 79.2

c) 1234

d) 59 (m²)

e) 1

f) 7.7

One mark for each correct answer (maximum 6 marks).

Notes:

Ensure the completed answer sheet is cleared away before the next team arrives.

Station 5

Resources:

Question paper

Copies of the worksheet

Scrap paper

Marking:

There are four possible solutions:

125 (5^3)

135 ($3^3 \cdot 5$)

225 ($3^2 \cdot 5^2$)

243 (3^5)

4 correct – 6 marks

3 correct – 3 marks

2 or less correct – 0 mark

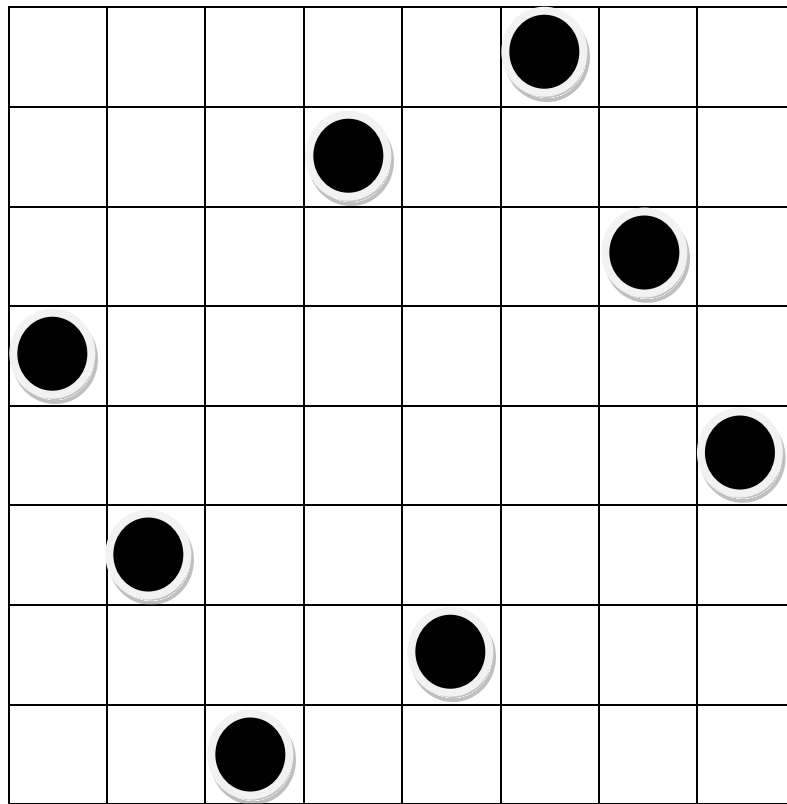
Notes:

Ensure any scrap paper is cleared away before the next team arrives.

Station 6

Resources:

Question paper, laminated grid, counters



Marking:

Correct solution – 6 marks

Notes:

Ensure counters are cleared away before the next team arrives

Station 7

Resources:

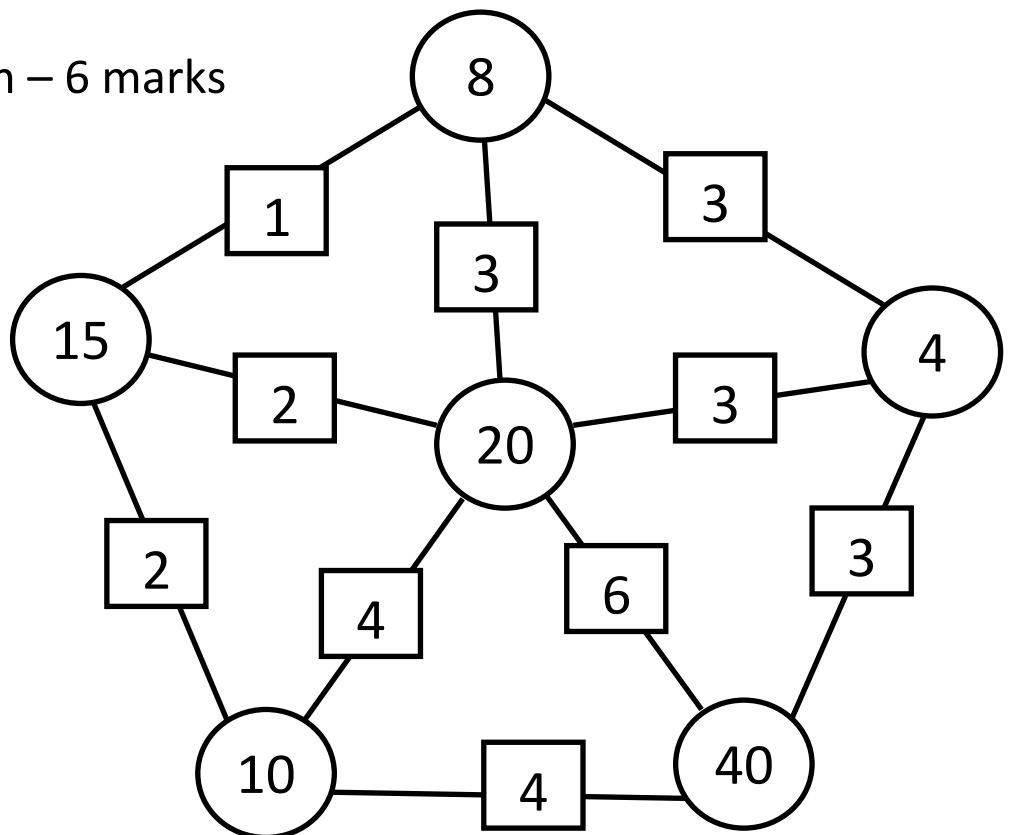
Question paper

Laminated worksheet

Counters with the numbers 4, 8, 10, 15, 20 and 40 written on them

Marking:

Correct solution – 6 marks



Notes:

Ensure any scrap paper is cleared away before the next team arrives.

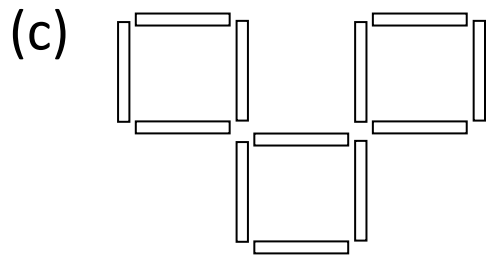
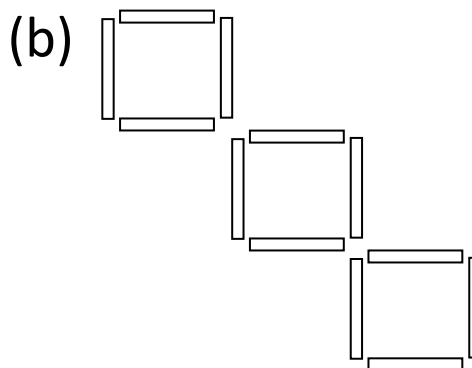
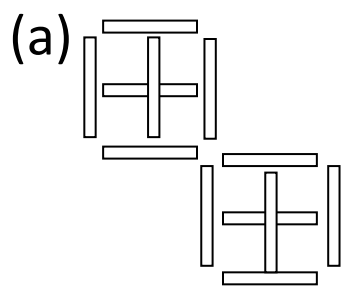
Station 8

Resources:

Question paper

Sticks

Marking – 2 marks for each correct solution:



Notes:

Allow rotations, or similar arrangements; for (a) there are numerous orientations. Please clear any matchsticks away before the next team arrives.